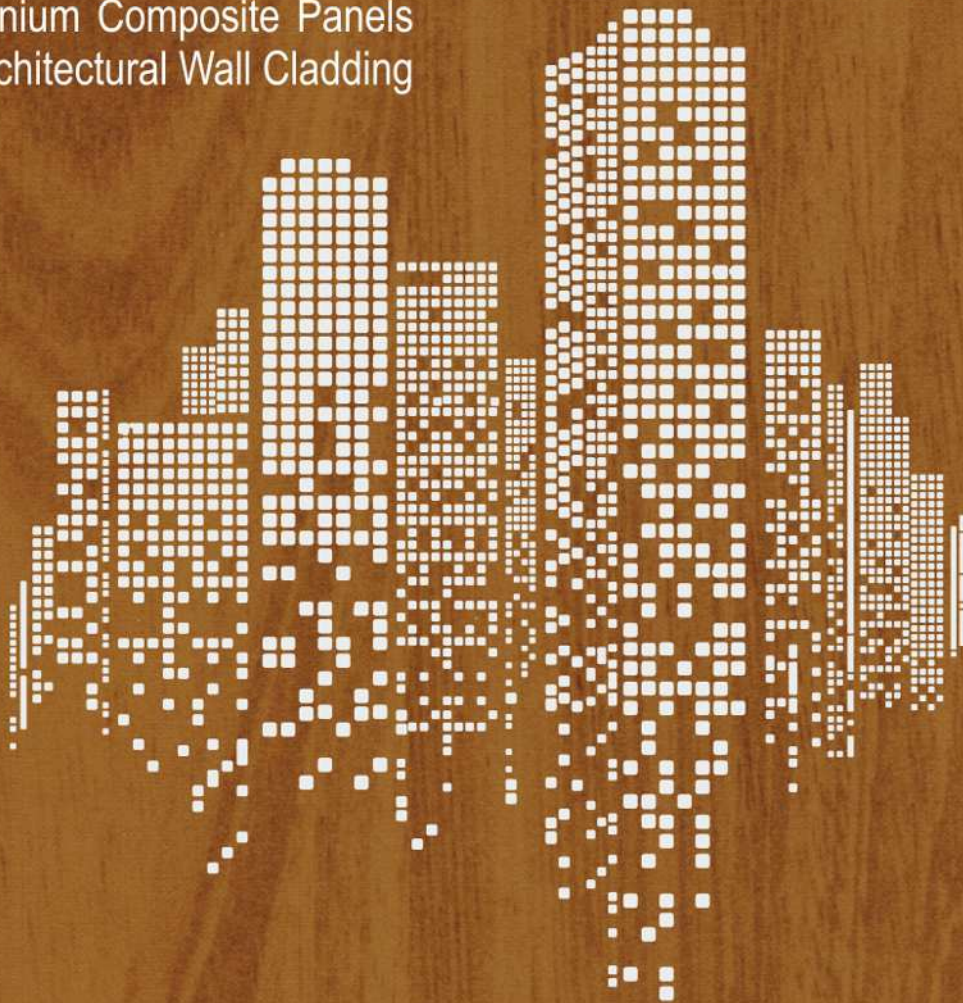


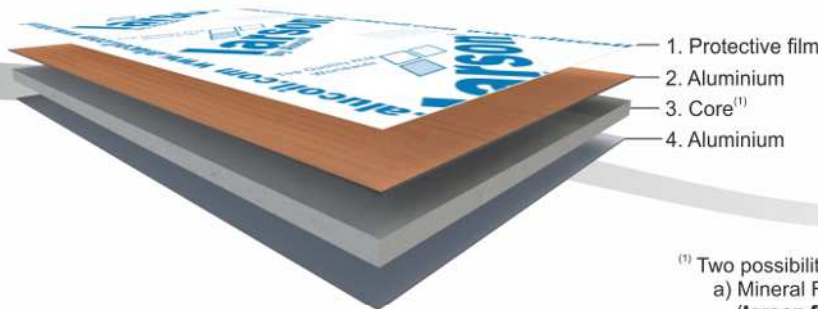
larson wood[®]
by Alucoil[®]

Aluminium Composite Panels
for Architectural Wall Cladding



Top Quality ACM - Worldwide


Alucoil[®]
Grupo Alibérico



- (1) Two possibilities
- a) Mineral FR core
(**larson fr**® Fire Class Architectural B-s1,d0 according EN 13501-1)⁽²⁾
 - b) Polyethylene core
(product for exclusive use in low buildings, canopies, signalization and corporate identity)

Aluminium composite panels for architectural wall cladding

larson® aluminium composite panel is formed by two aluminum sheets bonded to either a fire resistant mineral core (FR), or a polyethylene core (PE). It is available in wood finishes from several colour schemes in either HQP High Quality Polyester or PVdF with COASTAL PRIMER paint systems, both suitable for outdoor use with outstanding UV performance.

They transmit the warmth of real timber with the advantages of our composite panels, enabling outstanding fabrication capabilities for folding, bending, perforating, and curving without losing its technical characteristics.

Finishes:

- a) **Exclusive:** English Cherry, Elegant Oak, Light Wenge and Dark Wenge
- b) Colonial Red, Wenge Royal, Walnut and Sunglow

| larson wood® (FR core) | Aluminium composite panel features | larson wood® (PE core) |
|---|--|---|
| 3 / 4 / 6 [mm] | Panel thickness | 3 / 4 / 6 [mm] |
| 6,14 / 7,78 / 11,06 [kg/m ²] | Panel weight | 4,66 / 5,56 / 7,36 [kg/m ²] |
| 0,5 [mm] | Aluminium thickness | 0,5 [mm] |
| 1583 / 3070 / 8630 [mm ⁴ /m] | Moment of inertia "I" | 1346 / 2637 / 6446 [mm ⁴ /m] |
| 1108 / 2150 / 6041 [kNcm ² /m] | Rigidity "EI" | 942 / 1846 / 4512 [kNcm ² /m] |
| 1000 - 1250 - 1500 [mm] | Standard width | 1000 - 1250 - 1500 [mm] |
| 2000 - 8000 [mm] | Min / max length | 2000 - 8000 [mm] |
| MINERAL FIRE RESISTANT | Core | POLYETHYLENE |
| B-s1,d0 ⁽²⁾ [EN 13501] | Reaction to fire test | M1 [UNE 23717 - NF P92-501] CLASS E [EN 13501-1] CLASS 0 [BS 476-6 & BS 476-7] |
| 70000 ⁽¹⁾ [N/mm ²] | Modulus of elasticity ⁽¹⁾ "E" | 70000 ⁽¹⁾ [N/mm ²] |
| 125 ⁽¹⁾ [N/mm ²] | Ultimate tensile strength ⁽¹⁾ "R _m " | 125 ⁽¹⁾ [N/mm ²] |
| 80 ⁽¹⁾ [N/mm ²] | Elasticity limit ⁽¹⁾ "R _{p0,2} " | 80 ⁽¹⁾ [N/mm ²] |
| 4 ⁽¹⁾ [%] | Elongation ⁽¹⁾ "%" | 4 ⁽¹⁾ [%] |
| 5005 | Aluminium alloy | 5005 |
| 2,3 mm/m Δ100°C | Aluminium thermal expansion | 2,3 mm/m Δ100°C |
| a) HQPE b) PVdF 70% kynar 500 2 layers with COASTAL PRIMER 31μ c) PVdF 70% kynar 500 3 layers 37μ | Coated surface | a) HQPE b) PVdF 70% kynar 500 2 layers with COASTAL PRIMER 31μ c) PVdF 70% kynar 500 3 layers 37μ |

⁽¹⁾ Aluminium features - Extended technical data sheet under request -
⁽²⁾ Alucoil's vertical riveted & 45mm cassette installation systems



English Cherry^(*) EX.



Walnut



Colonial Red^(*)



Light Wenge^(*) EX.



Sunglow



Wenge Royal^(*)



Elegant Oak^(*) EX.

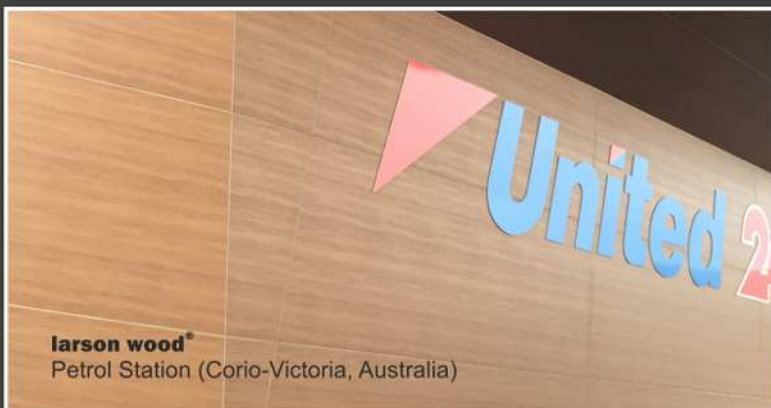


Dark Wenge^(*) EX.

^(*) Stock 1500mm wide (other request availability)



larson wood[®]
Residential buildings (Bertamirans, Spain)



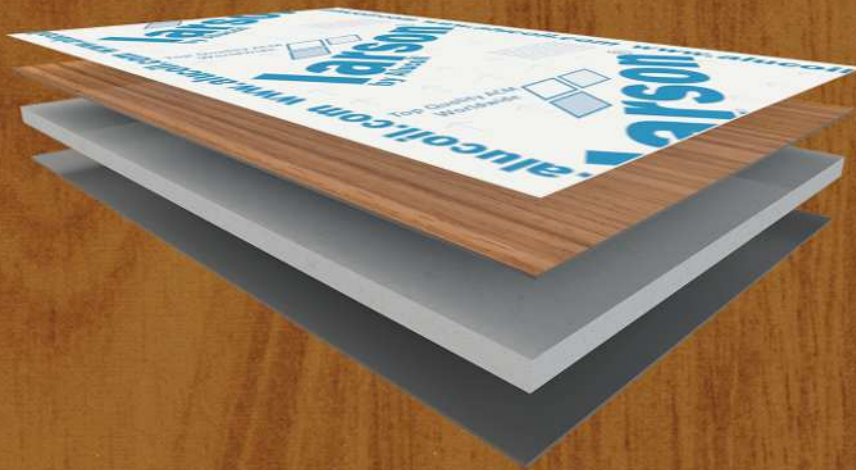
larson wood[®]
Petrol Station (Corio-Victoria, Australia)



larson wood[®]
Music Academy (Bialystok, Poland)

larson wood®

by Alucoil®



www.alucoil.com

Polígono Industrial de Bayas
C/ Ircio. Parcelas R72-77
09200 Miranda de Ebro, Burgos
SPAIN
Tel.: +34 947 333 320 Fax: +34 947 324 913
info@alucoil.com



Alucoil®
Grupo Alibérico